

Games Section

In the Advance variation of the French black must play actively to attack the otherwise static centre where, understandably, he has less space. Here is an example of that, a charming miniature from over a century ago:

1 e4 e6 2 d4 d5 3 e5 c5 4 c3 Qb6 5 Nf3 Nc6 6 Be2 cxd4 7 cxd4 Bb4+ 8 Nc3 f6 9 exf6 Nxf6 10 0-0 0-0 11 Bd3 Bd7 12 Ne2 Bd6 13 a3 Rae8 14 Ng3 Bxg3 15 hxg3 Kh8 16 Bc2 e5 17 dxe5 Nxe5 18 Nxe5 Rxe5 19 Bf4 Ng4! 20 Qd2 Rh5 21 b3 Qf6 22 Rad1 g5 23 Qxd5 Rh1+! 0-1; C Wemmers - J Metger, Cologne 1877.

But black, a Metropolitan player, fails to heed this lesson below, shifting his KR to e8 when its defensive potential was required elsewhere. He never overcomes white's

advantage in the centre and pays the price.

Game 135

SM Kalinsky

A Amusa

London League, 2008-9

French Advance

1 e4 e6 2 d4 d5 3 e5

Also a great favourite with Geoff Hollis, see Games 3, 46 & 80.

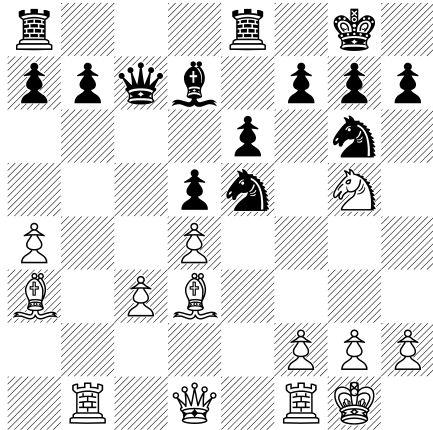
3 ... c5 4 c3 Nc6 5 Nf3 Qb6 6 Be2 cxd4 7 cxd4 Bb4+

Perhaps not best says Harding (1979); 7 ... Nh6. **8 Nc3!?**

8 Kf1- to embarrass the bishop on b4 - now: 8 ... Bd7 9 a3 Be7 10 Nc3 f6 11 b4 Rc8 12 Na4 Qd8 13 h4 b6 14 Rh3 Kf8 15 Bf4±; 1-0 in 32, Dückstein-Lombard, 1974

8 ... Nge7 9 0-0 Bxc3 10 bxc3 0-0 11 a4 Bd7 12 Ba3 Rfe8 13 Bd3 Ng6 14 Rb1 Qc7 15 Ng5 Nxe5

black Amusa



white Kalinsky to move

advantage but not decisive. Syd played it well and took his chances."



SMK

16 dxe5 Qxe5 17 f4!?

Bit loosening.

17 ... Qxc3 18 Bb2 Qc5+

19 Kh1 e5 20 Qh5 h6 21

Nxf7! Nxf4 22 Rxf4!

exf4 23 Qg6

23 Nxf6+! is a quicker death.

1-0.



Game 136

BA Barlow

Butterworth

Ipswich Open, 1996

Alapin Sicilian

[ex BCM 05/96]



Asked about this game, black, Abegbenga Amusa, was sporting enough to comment:

"I quite agree that the defence was too passive and 19 ... e5 was a blunder, better was d4 with white still having an

1 e4 c5 2 c3 Nf6

See Game 76, Bhatia v K Harman, London League, 2006, for 2 ... d5.

3 e5 Nd5 4 d4 cxd4

Or 5 Bc4 Qc7 6 Qe2 Nb6 7 Bd3 Nc6 8 Nf3 e6 9 cxd4?? Nxd4 0-1; MJ Corden -v- JT Farrand, British Championship 1972.

5 cxd4 e6 6 Nf3 b6

Maybe not the best try against Bertie: a Basman system against a Basman fan.

7 Nc3 Bb7 8 Bd3 Na6 9 Nxd5 exd5 10 0-0 Be7 11 Bf4 Nc7 12 Rc1 Ne6 13 Bg3 Bc6 14 Bb1 Rc8 15 Qd3 g6 16 a3 0-0 17 Rc3 Bb7 18 Rfc1 Rxc3 19 Rxc3 Qb8 20 Nh4 Rc8



white Barlow to move

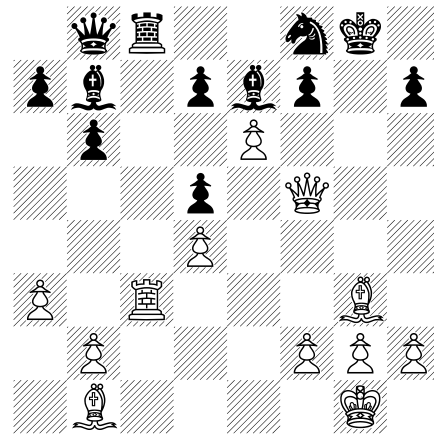
21 Nf5!! gxf5 22 ♔xf5 Nf8
 22 ... Kf8 23 Qxh7 Ke8
 24 Qg8+ Bf8 25 Bg6 Rxc3 26 Bxf7+ Kd8 27 bxc3 Kc7 28 Bxe6 dxe6 29 Qf7+ Kc6 30 Qxe6+ Kb5 31 Qd7+ Ka5 32 a4 a6 33 e6 Qc8 34 h4!

23 e6 ...



Bertie at the South Bank

black Butterworth to move



white Barlow

23 ... Rxc3 24 Qxf7+ Kh8 25 bxc3 d6 26 Qxe7 Ng6 27 Qf6+ Kg8 28 e7 28 Qf7+ Kh8 29 Bh4 Qf8 30 Bf6+ Qg7 31 Bxg7# was quicker.
 1-0.

