

Game 139

**D Wright**

**IP Ponter**

Paignton Premier, 2005

*London System*

[REAH]

"I would not have chosen this game myself" - Danny Wright.

**1 Nf3 d5 2 d4 Nf6 3 Bf4**

Danny is well-versed in his favourite openings, but steers clear of traps in theoretical variations. Here, he experiments with the Colle System without trapping his Queen's bishop inside the pawn chain, or, as I know it from my grandmasterly friend, Mark, the Hebden system.

*[Psst! Ron, this is not a Barry-cum-Hebden but a Franklin type London System-jp]*

**3 ... e6**

Not quite a London System, according to normal move order in Michael Franklin's games.

**4 e3 c5 5 c3**

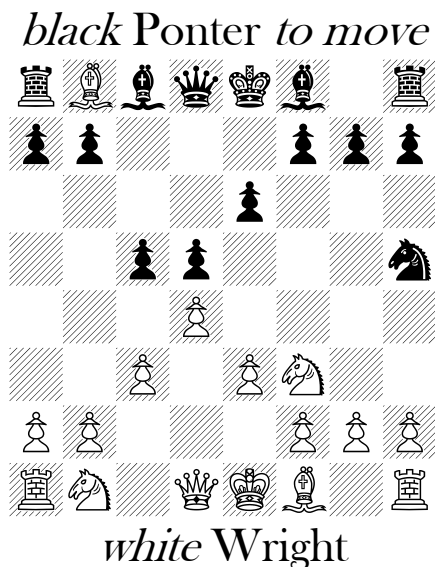
Or black might have tried:  
5 ... Nc6 6 Nbd2 Bd6 7 Ne5 Qb6?? 8 Nec4! dxc4 9 Nxc4 Qd8 10 Nxd6+ Ke7 11 dxc5 1-0,

**Z Mehmet -v- A Nadjar,**  
Val Maubuée 1990.

**5 ... Nh5**

Apart from breaking the rule of not moving the same piece twice early on, Black is scornful of White's apparent lack of ambition, and will be punished accordingly. Clearly, he is unaware of Danny's prowess in tactical situations

**6 Bxb8 ...**



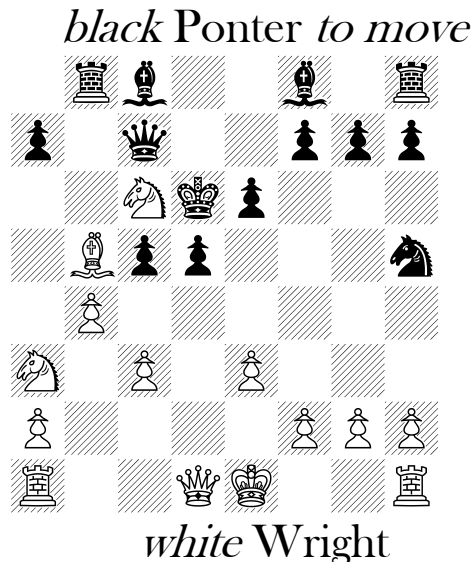
**6 ... Rxb8 7 Bb5+**

The hidden attack on Black's wandering knight will secure white's advantage after 7 ... Bd7 8 Bxd7+, when Ne5 follows, whether attacking the Queen on d7, or by the check on e5

**7 ... Ke7 8 dxc5 Qc7 9 b4 b6 10 Nd4!**

Again, White gains a tempo by hitting the knight and threatening a gain of the exchange. Sadly, Black is already compromised

**10 ... bxc5 11 Nc6+ Kd6 12 Na3! ...**



**12 ... cxb4 13 cxb4 a6 14 Nc4+! Kd7 15 Nxb8+**

A rarity indeed. Double check at move fifteen.

**15 ... Ke7 16 Nc6+ Ke8 17 Ba4 Bd7**

Still no time to save his knight, *en prise* for no less than eight moves

**18 N4e5 Bxb4+**

Amusingly, White now leads by five checks to one, disregarding his material advantage

**19 Nxb4 Qc3+**

Black tries to unsuccessfully make up the leeway

**20 Kf1 ...**

White still threatens both minor pieces, not to mention Black's Queen after 20 ... Qxe5 21 Bxd7+ Kxd7 22 Qa4+ when with only King moves available black is quickly mated.

Game 140

**PP Taylor**

**EOMC Teichmann**

Cambridge Univ Ch, 1978

*Ruy López, Breyer*

[PP T

ex Dragon]

**1 e4 e5 2 Nf3 Nc6 3 Bb5  
a6 4 Ba4 Nf6 5 0-0 Be7?**

5 ... Nxe4 is forced.

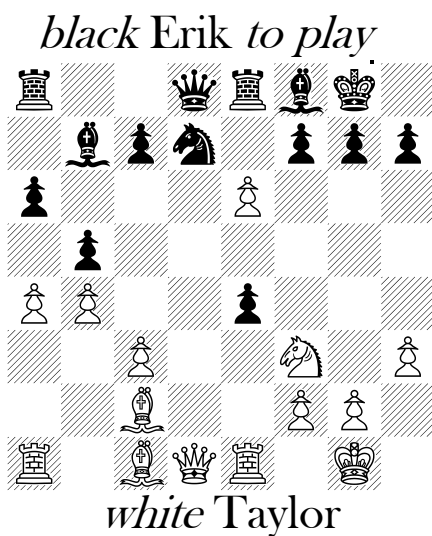
**6 Re1 b5 7 Bb3 d6 8 c3  
0-0 9 h3 Nb8**

'J 'adoube not planning ...  
Bxh3' – EOMC T.

**10 d4 Nbd7 11 Nbd2  
Bb7 12 Bc2 Re8 13 b4  
Bf8 14 a4!! d5 15 dxe5  
Nxe4**

Too late.

**16 Nxe4 dxe4 17 e6!!**

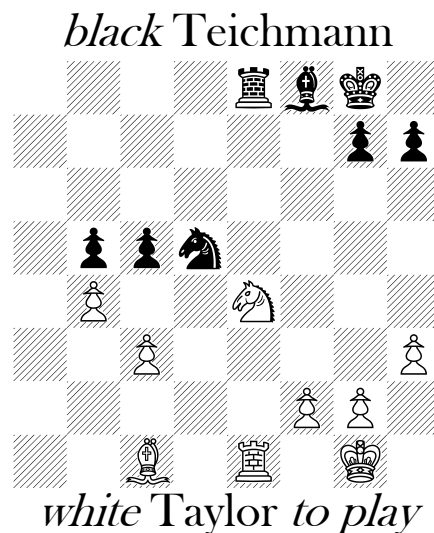


Not 17 Bxe4 Bxe4 18  
Rxe4 Nxe5; and if 17  
Bg5 f6∞

**17 ... Nf6**

17 ... exf3 18 exf7+ Kxf7  
19 Bb3++–

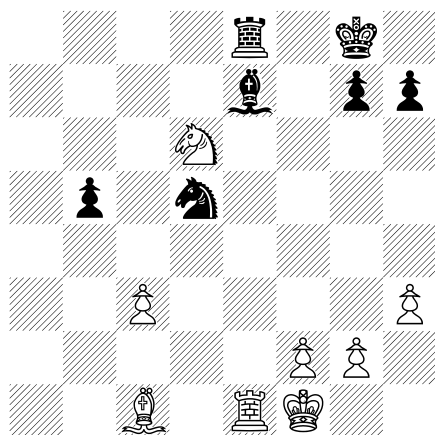
**18 exf7+ Kxf7 19 Bb3+  
Bd5 20 Ng5+ Kg8 21  
axb5 axb5 22 Rxa8  
Qxa8 23 Bxd5+ Qxd5 24  
Qxd5+ Nxd5 25 Nxe4 c5**



25 ... Nxc3 26 Nf6++–

**26 bxc5 Bxc5 27 Kf1  
Be7 28 Nd6!! ...**

*black Erik to move*



*white Taylor*

28 ... Rb8 29 Nxb5 Bf6  
30 c4 Nb6 31 Bf4 Ra8  
32 Nd6 h6 33 Be3 Rd8  
34 Nb7 Rb8 35 Bxb6  
Rxb7 36 c5 Bd4 37 Rd1  
Be5 38 Rd5 Bb8 39 Ke2  
Kf7 40 Kd3 Ke6 41 Kc4  
1-0.

## **the next issue**

London League 2009/10 -  
all the scores, stats and  
tables -

Plus:

Green v Thomas  
Elwell v Milnes  
Sowray v Brown  
Milnes v Jordan  
Natif v Ferguson  
Malcolm v Brissenden