

Game 141

**BN Green**

**RK Thomas**

London League, 2009-10

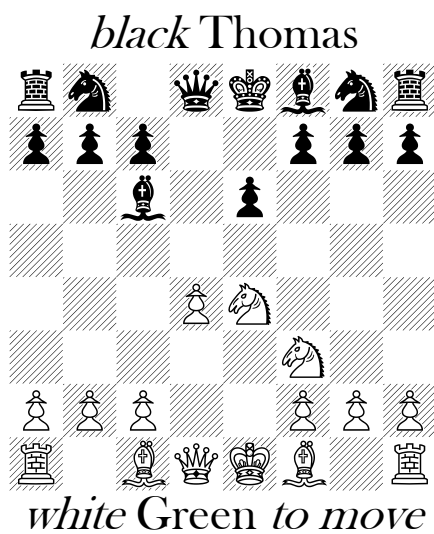
*French*

**1 e4 e6**

White is good in the French eg BNG v C MacKenzie, London League 2002-3, **Game 34**.

**2 d4 d5 3 Nc3 dxe4 4 Nxe4 Bd7 5 Nf3 Bc6**

Fort Knox Variation, recommended in Samarian's Opening Tactics for Club Players (Robert Hale 1980).



**6 Bd3 Nd7 7 Bg5 ...**

Suba quotes 3 of his games here, this move not considered. Why Black offers his KB and White does not bite his hand off is beyond me.

**7 ... Be7 8 h4 h6 9 Bd2 Ngf6 10 Qe2 Nxe4 11 Bxe4 Bxe4**

Though exchanges, the main idea behind black's system, I suppose, have simplified Black's thinking, White maintains a plus in space and variety of plans.

**12 Qxe4 c6 13 0-0-0 Nf6 14 Qe2 Qd5 15 c4 Qf5 16 Rhe1**

"16 Ne5 Qe4 17 Rhe1±" recommends Barry. Full score on Matt's site.

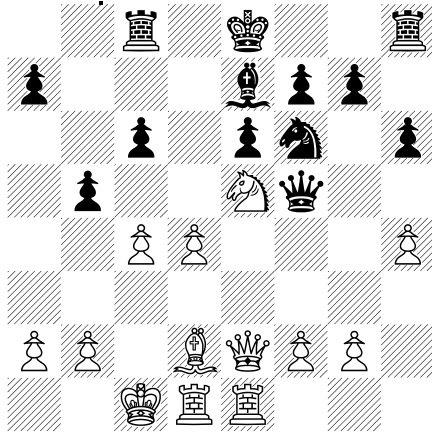
**16 ... b5?**

**16 ... Ng4**

17 Ne5 Rc8

CC No 34

*black* Thomas



*white* Green to move

Played a good game.  
Why not let us know?

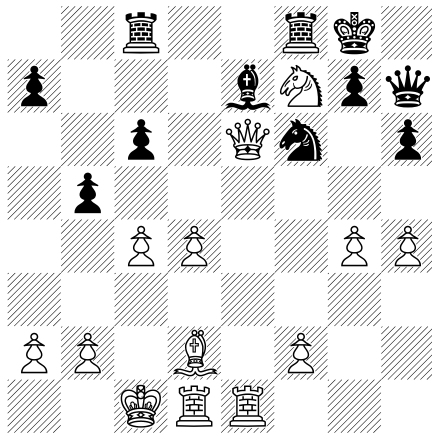
James Pratt  
Editor  
23b Essex Road  
Brookvale  
Basingstoke  
Hants  
RG21 7TA.

18 g4 Qh7 19 Nxf7

0-0 20 Qxe6 ...

chessparrot@hotmail.com  
01256 327 175

*black* resigns



*white* Green

CC No 34

The discovery is too disruptive.

1-0.