

# Cavendish Chess Club

## June 2009 Newsletter

Following the introduction of ChessBase features in our last issue, together with access to an increased number of rare and entertaining games, courtesy of The Chess Parrot, we await the approval of club members. Matt Piper offered three of his recent, attractive wins. His game against 200+ graded Bob Eames, of Hackney, is especially worthy of study, and will appear in due course.



Game 125

**JE Upham**

**AA Peters**

✉ Thematic, 1978-9

*Sicilian Pelikán B33*

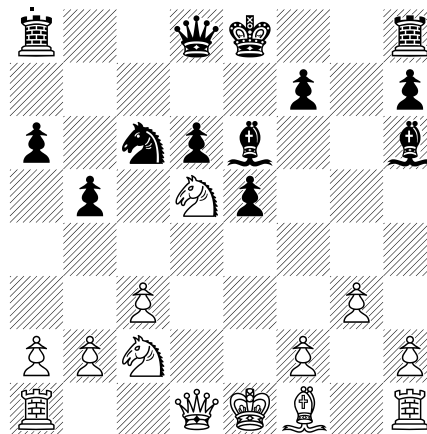
[Ken Harman ex 'The Basingstoke Gazette']

1 e4 c5 2 ♘f3 ♘c6 3 d4 cxd4  
 4 ♘xd4 ♘f6 5 ♘c3 e5 6  
 ♘db5 d6 7 ♙g5 a6 8 ♙xf6  
 gxf6 9 ♘a3 f5! 10 exf5 ♙xf5  
 11 ♘d5 b5 12 c3 ♙e6 13 ♘c2  
 ♙h6!?! 14 g3! [A fairly recent  
 idea. White wants to exert  
 pressure along the g2/a8  
 diagonal and eventually  
 control d5.]

In case some members are confused. Yes, Ken Harman and John Upham are club

members. The original connection? Both were 'big noises' in the Basingstoke - still the home of James Pratt's TCP - started in the 1970s.

*black Peters to move*



*white Upham*

14 ... 0-0 15 ♙g2 ♜c8 16 0-0  
 f5 17 a4! ♘e7!?! 18 ♘xe7+  
 ♙xe7 19 axb5 axb5 20 ♜a6!

♠f8 21 ♘b4 d5?! 22 ♘c6  
 ♠xc6 23 ♠xc6 ♔d7 24 ♙xd5  
 1-0.

Such 'short rations' will be compensated by our next offering, but it is a good opportunity to show John Upham's potential, despite a low grading, together with the contribution to Cavendish by our Basingstoke connections.



**John with Benkö inspired glasses**



**Pal with Upham inspiring face-furniture**



Game 126

**J Ward** King's Head

**MS Piper**

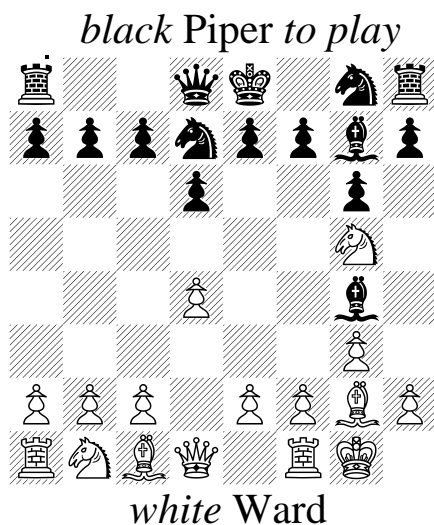
London League 2008/9

*Old Indian, Tartakower A41*

[Piper]

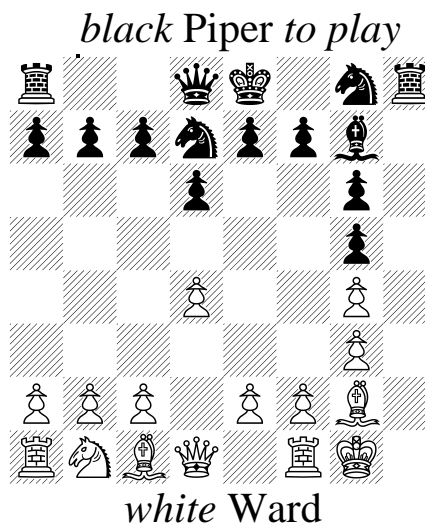
1 ♘f3 d6 [I have long been jealous of King's Indian devotees. Life is simple when

you play the same five moves against 1 d4, 1 c4 or 1 ♘f3. Against an expert like Kramnik, it might be inadvisable, but unpredictable moves often win games in themselves between players of equal strength. John Cox's book tells Nimzo-Indian addicts how to react when white fails to co-operate with 2. c4. However, rather inconsiderately, he hasn't yet written one on 1. ♘f3.] 2 d4 ♙g4!? [The problem, if you play the Bogo- and Nimzo-Indians, *and* 1 ... e5 against the English, but *not* the Queen's Indian, is how to proceed after 1 d4 ♘f6 2 c4 e6 3 ♘f3-? You may end up being forced into unfamiliar lines. Thus, I've tried many ideas over the years and 1 ... d6 is the latest. Nevertheless, by the time you read this, I will have thought up something even better!] 3 g3 ♘d7 4 ♙g2 g6?! [Normally black will either have captured on f3 by now, or played 4 ... e5. So, is this a novelty good or bad?] 5 0-0 ♙g7 6 ♘g5!



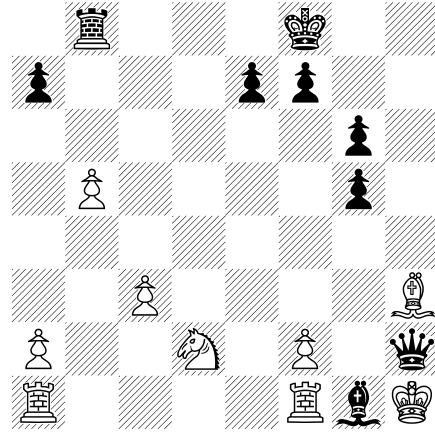
**6 ... h6** [White is alert to any flaw in move order. He threatens the b-pawn, and after **6 ... c6 7 h3 ♔e6 8 ♘xe6 fxe6** is horrible for black. When I played **4 ... g6**, I told myself to watch out for knight moves leaving the black bishop in limbo, but unfortunately I had only looked at **6 ♘fd2 c6 7 h3 ♔e6**. With a quick check to ensure that neither Cox, nor Taylor, had seen these moves, I played the one remaining possibility.] **7 h3?** [White must play **7 ♘xf7! ♔xf7 8 h3 ♔h5 9 g4 ♔xg4 10 hxg4 c6 11 e4 ♔b6 12 c3 ♘gf6** and **13 f4** with a plus.] **7 ... hxg5 8 hxg4** [Possibly a unique position. Has there ever been a

full house on the g-file after only seven moves? The game is beginning to resemble one of those reconstruction puzzles where you have to guess the moves leading to the position. Effectively, a problem that everyone ignores because it is too hard, and completely pointless.]



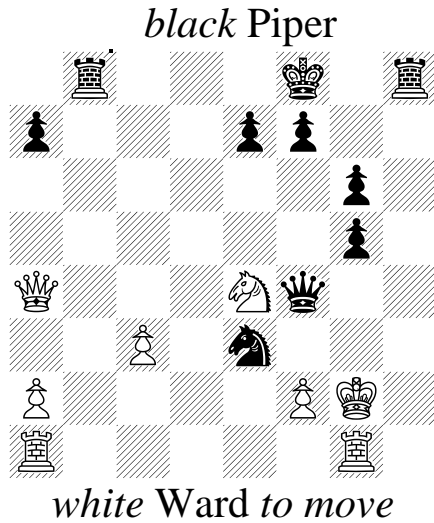
**8 ... c6 9 e4 ♔b6** [Blocking the centre with **9 ... c6 10 ♘d2 d5** would have been more prudent after **11 e5**.] **10 c3 c5?! 11 e5 dxe5** [Following **11 ... cxd4 12 cxd4 dxe5 13 dxe5 ♘xe5 14 ♔a4+ ♔f8 15 ♔e3 ♔xb2 16 ♘d2 ♔c8** may be alright, but it is not easy when short of time. It was 9pm already!] **12 dxc5 ♘xc5 13 ♔e3 ♔c7** [If **13 ... ♔xb2 14**

♙xc5 ♚xa1 15 ♚a4+ ♔f8 16  
 ♚b3 traps the Queen.  
 Alternatively 13 ... ♖d8 14  
 ♚c2 ♚c7 15 ♚b5+ ♘d7 16  
 ♚xb7 ♚xb7 17 ♙xb7 and the  
 pawns will be hard to control,  
 since 17 ... ♖b8 18 ♙c6 ♖xb2  
 fails to 19 ♖d1 ♘gf6 20 ♘a3  
 winning the knight on d7.] **14**  
**♙xc5!?** [He should try 14 ♚d5  
 ♖c8 15 ♚xc5 ♚xc5 16 ♙xc5  
 ♖xc5 17 ♙xb7 ♘f6 18 ♙f3  
 with better endgame chances.]  
**14 ... ♚xc5 15 ♙xb7 ♖b8 16**  
**b4 ♚c7 17 ♙g2 ♘f6 18 ♚a4+**  
**♔f8** [Unaccountably, I spent 5  
 of my 12 minutes thinking 18  
 ... ♚d7?? whereupon 19 ♙c6]  
**19 b5? e4 20 ♙xe4 ♘xg4 21**  
**♘d2?** [21 ♙g2 f5 22 ♘d2  
 ♙xc3 23 ♖ac1 ♚a5 24 ♚xa5  
 ♙xa5 with opposite coloured  
 bishops is white's last hope.]  
**21 ... ♙e5 22 ♙f3** [White  
 cannot play 22 ♙g2 ♙xg3 23  
 ♚xg4 ♙h2+ 24 ♔h1 ♙g1+ 25  
 ♚h3 ♖xh3+ 26 ♙xh3 ♚h2#



Analysis diagram

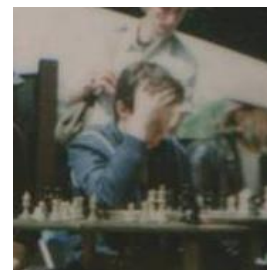
& 22 ♙c6 f5 23 ♘f3 ♙xg3  
 wins.] **22 ... ♘h2 23 ♖fd1**  
**♙xg3 24 b6** [24 ♙g2 ♖h4 25  
 ♘e4 ♙xf2+ 26 ♔xf2 ♘g4+ 27  
 ♔e2 ♚h2 28 ♖g1 ♘f6 29 ♔e3  
 ♖c8 30 ♖ac1 ♘xc4 31 ♙xc4  
 f5 is winning.] **24 ... ♚xb6 25**  
**♘e4 ♘xf3+ 26 ♔g2 ♘h4+ 27**  
**♔xg3 ♚c7+ 28 ♔h3 ♚f4 29**  
**♖g1 ♘f5+** [29 ... ♚f3+ 30  
 ♘g3 ♘f5+ 31 ♚h4 ♖xh4#;  
 Missed in the time scramble.]  
**30 ♔g2 ♘e3+**



openings, often inspired by another Surrey man, Basman.)



**D Kumaran**



**BA Barlow**

**31 fxe3 ♖h2#.**

Black's opening strategy, although interesting, was marred by the inaccuracy on move five. However, the ferocity of his concluding attack, given the opportunity, was overwhelming.



Game 127

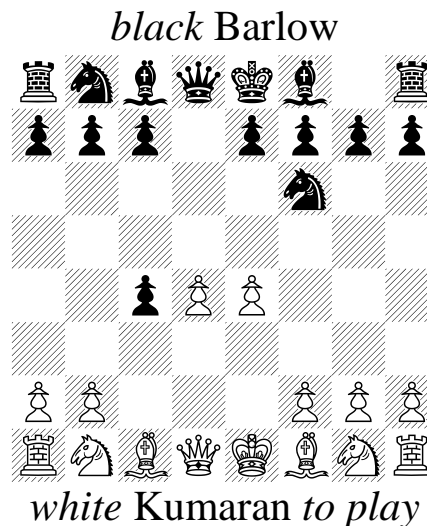
**IM D Kumaran**

**BA Barlow**

BCF Congress Rapidplay,  
1994

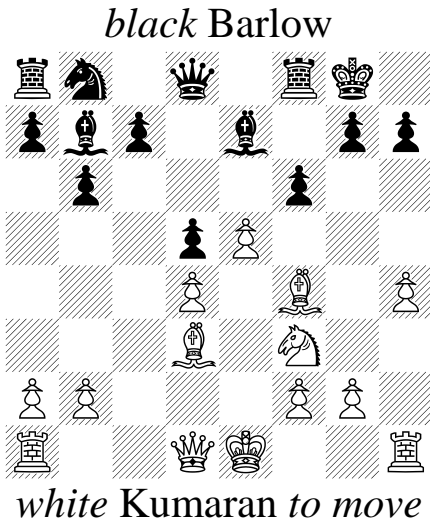
*Queen's Gambit Accepted D20*  
[ex 'Chess Circuit' 01/95]

**1 d4 d5 2 c4 dxc4** ("Fearless" - MCO 10 (1965).) **3 e4 ♘f6** (Rare, but Barlow has always gone his own way in the

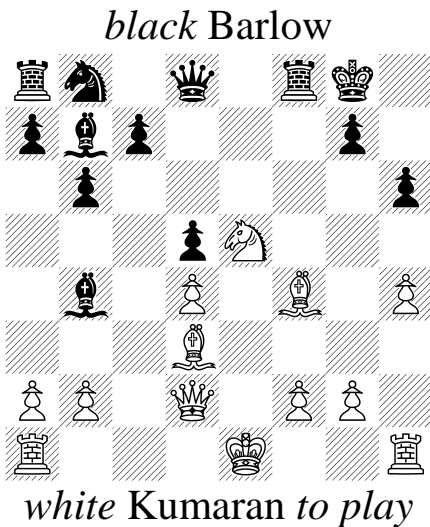


**4 e5 ♘d5 5 ♙xc4 e6** ('.. inferior 5 ... e6 fails to liberate his QB.' - Flear (1994). A more frequented path is 5 ... ♘c6 6 ♘e2 ♘b6 7 ♙d3 ♙e6 8 ♘bc3 ♙d7 9 ♘e4 with a white

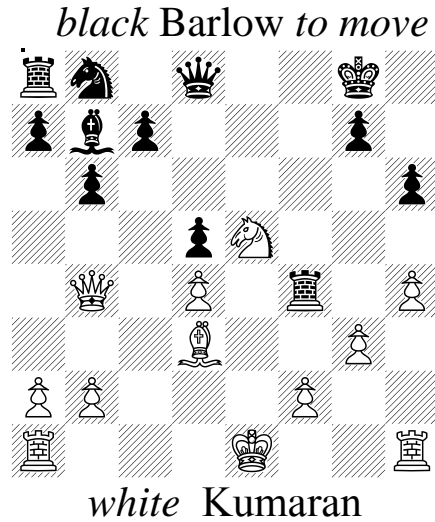
plus, Suetin-Korchnoi, Budva 1967.) 6 ♘c3 ♙e7 7 ♘f3? (7. ♙g4! –Upham.) 7 ... b6 8 ♘xd5 exd5 9 ♙d3 ♙b7 10 ♙f4 0-0 11 h4 f6?



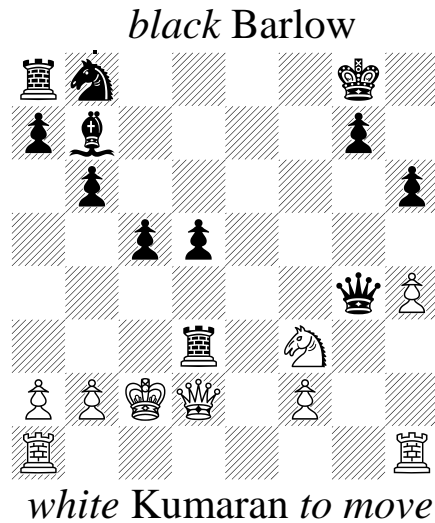
[11 ... h6] 12 ♙c2 h6 13 ♙d2?! fxe5 14 ♘xe5 ♙b4! [the move white missed!-Barlow.]



15 ♙xb4 ♙xf4 16 g3?!



16 ... c5 17 ♙d2 ♙xd4 18 ♘f3 ♙e8+ 19 ♘d1 ♙h5 20 g4? ♙xg4 21 ♙c2 ♙xd3!



22 ♘xd3 ♙e4+ 23 ♘c3 ♙c4#.



Game 128

**J Redmond** NW Eagles

**MS Piper** Barbican II

\*4NCL 2008/09

*Sicilian Big Clamp A02*

[Piper]



**J Redmond**



**MS Piper**

[Opening preparation in the \*4NCL is taken very seriously. Before the games start, the venue resembles Tottenham Court Road on a busy shopping day; laptops everywhere! I had guessed my opponent in advance and prepared the black side of the

Ruy López..] 1 f4!?! [Not part of my preparation. Sorely tempted to play 1 ... e5, angling transposition into the King's Gambit after 2 e4, I remembered that my Captain, Jon Rogers, was on the next board, and couldn't let him see me sacrifice a pawn on the first move, without really knowing what to do next. After the game, my opponent told me that he would indeed entered the murky waters of the From Gambit, so my discretion proved to be wise. Incidentally, while speaking of transpositions, I really think that Peter Taylor's method of luring his opponent into a Vienna Opening despite having the wrong coloured pieces should be recorded for Cavendish posterity!?! 1 ♖f3 f5 2 d3 ♗c6 3 e4 e5 4 d4!] Matt's style of annotation is unique, as I would never contemplate fourteen lines of explanation on a single move. 1 ... ♗f6 2 ♗f3 g6 3 d3 ♕g7 4 e4 0-0 [Without 'My Sixty Memorable Games' we would all have played 4. ... d5 first.<sup>1</sup>]

---

<sup>1</sup> See Game 21 v Letelier, p 137.

**5 ♖e2 d6 6 0-0 c5 7 c3**  
 [White's opening play has hardly been critical. However, on the journey to Sunningdale, John Hodgson explained the hidden dangers of the 'Clamp' variation in the Closed Sicilian, so I decided to vary while the option still applied.]  
**7 ... c4 8 d4 ♘xe4 9 ♙xc4 a6**  
 [Normally, I would not have spent too long in playing 9 ... d5 here, as it gave white a clear plan by ♘e5, aiding a kingside attack. Without the kingside weakness, I still was unsure of white's subsequent strategy.]  
**10 ♚e2 ♘f6 11 ♙d3 e6**  
 [Stopping f5 and hemming in the black squared bishop on c1 more effectively.]  
**12 ♘bd2 ♘bd7 13 ♘e4 ♘xe4 14 ♙xe4 ♘f6 15 ♙d3 ♙d7**  
 [If 15 ... b5 16 a4 and the queenside pawns look sickly.]  
**16 ♙d2 b5**  
 [White needs to create a better plan, as black's position is easier to play. But, if white can solve the inactivity of his bishop on c1, he can emerge.]  
**17 a3**  
 [After 17 ♙e1, he can play ♙h4 with reasonable chances.]  
**17 ... ♙c6 18 ♚ae1 ♚b6 19 ♚f2 ♚b7!**  
 [Slowing down white's idea of ♚h4,

♘g5 and maybe, f5, by putting pressure on g2.] **20 ♚h4 ♚fe8**  
 [Planning the invasion of e4, which is currently impossible. If 20 ... ♙e4 21 ♙xe4 ♘xe4 22 ♚xe4 ♚xe4 23 ♘g5 the black King has an escape square on f8. Also, futures sacrifices with f5 will be less potent, as black contests the open e-file without delay.]  
**21 ♚f2 ♙e4 22 ♙f1 ♙d5 23 ♙d3 ♙e4 24 ♙f1**  
 [With a draw offer. Objectively 24 ... ♙f5 is probably best, but I was still a bit concerned about white's kingside attack and thought this might lose a tempo to h3, and g4 later on. So, no thanks!]  
**24 ... ♙xf3 25 ♚xf3 ♘e4 26 ♙c1 f5 27 ♙d3 ♙f6 28 ♚h3**  
 [28 ♙xe4 fxe4 29 ♚xf6 exf3 30 ♚xc6 fxe2 is better for black.]  
**28 ... d5 29 ♙xe4?**  
 [Not a pleasant choice, but after this move white is pretty much lost. His best hope was retention of the two bishops.]  
**29 ... dxe4 30 ♚ff1 a5 31 ♙d2 ♚d5 32 ♚e3 ♚b3 33 ♙c1 ♚ed8 34 ♚d1 ♚ab8 35 ♚fe1 ♚d5 36 g3 ♚c4 37 ♚e2 ♚b3 38 ♙e3 h5 39 ♚f1 ♚c8**  
 [As both players were short of time, I decided to put all my

pieces on white squares, safe from the marauding bishop, in terms of one move blunders.]

**40** ♖g2 ♜c4 **41** ♞d2 ♔f7 **42** ♞a1 ♞d7 **43** ♚d1 [Going down without a fight. His best chance was to avoid any exchange of queens.] ♚xd1 **44** ♞axd1 b4 **45** axb4 axb4 **46** ♞c1 ♞dc7 **47** ♞dc2 ♔e7 **48** ♔f2 ♔d6 **49** ♔e2 ♔d5 **50** h4 ♙e7 [Threatening to take on c3, and if white recaptures with the pawn, ♙a3 forces the defenders away. 51 ♔d2 is answered by b3!] **51** ♔d1 bxc3 **52** ♞xc3 ♞xc3 **53** ♞xc3 ♞xc3 **54** bxc3 ♔c4 **55** ♔c2 ♙d8 **56** ♙d2 [56 ♙c1 ♙a5 57 ♙d2 e3 58 ♙xc3 ♙xc3 is a better defence but would not change the outcome. White's bishop is little better than a pawn.] **56** ... ♙a5 **57** ♙e1 e3 **0-1.**

Matt's appreciation of the final position was both far-sighted and the results of persistent pressure, preceded by the excellence of his defensive resources within the first thirty moves. - RFA H

