

Cavendish Chess Club

September 2009 Newsletter

This section is produced using ChessBase, courtesy of <http://games.groups.yahoo.com/group/chessparrot>.

However, this facility increases the need for submitted game scores, rather than settling for 'short rations'. So, Willie, Mark, John (Cox), Matthew, Sam, Garry, Peter, John (Merriman) and Miss Prathiba, what about it? Naturally, publishable games from other club members will receive sympathetic consideration, as grading is less important than entertainment vale.



Game 129

J Ryan

M Ferguson

Hastings Masters, 1995

Ruy López, Exchange C68

RFA H



Joe Ryan



Mark Ferguson

1 e4 e5 2 ♘f3 ♘c6 3 ♙b5 a6
4 ♙xc6

A matter of personal preference, the resultant position often ceding little more than equality for white. However, Fischer, Emanuel Lasker and Alekhine were adherents.

4 ... dxc6 5 0-0

Slightly more ambitious than
5 d4 exd4 6 ♙xd4 ♙xd4 7
♘xd4 ♙d7 with ... ♘f6 or

♙d6, all of which achieve even positions, if fifth moves are omitted, and giving more scope for aggressive, or innovative, play in a simplified position.

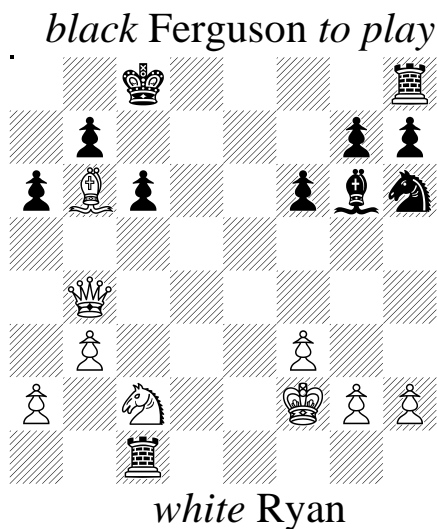
5 ... ♙d6 6 d4 exd4 7 ♖xd4 f6 8 b3 ♗e7 9 ♙e3 ♙d7 10 ♜bd2 c5 11 ♗c3

Too passive, and ceding the initiative to black.

♙c6 12 ♜fe1 0-0-0 13 ♜c4 ♙xe4 14 ♜xd6+ ♗xd6 15 ♙xc5 ♗d5 16 ♜ad1 ♗xd1 17 ♜xd1 ♜xd1+ 18 ♜e1 ♜h6 19 f3 ♙xc2

Of course, white's position is already compromised.

20 ♙b6 c6 21 ♚f2 ♙g6 22 ♜c2 ♜c1 23 ♗b4 ...



23 ... ♜xc2+

White should resign after blundering away his knight, but hopes for a swindle during the time scramble.

24 ♚g3 ♜f5+ 25 ♚h3 ♜e8 26 g4 ♜e7 27 ♗d6 ♜d5 28 ♙a7 ♜c7 29 a4 ♜ce2 30 ♙b6 ♜2e7 31 ♙f2 ♜d7 32 ♗c5 h5 33 ♙g3 hxg4+ 34 ♚xg4 ♜h8

Mark avoids any traps and commences his own winning attack, although white tried:

35 ♙d6 ♜h5 36 ♗a3 ♜g5+ 37 ♚h4 ♜d8 38 ♙f8 ♜d4+ before shaking hands. Quiet efficiency and accuracy by one of our best players.

0-1.



Game 130

HC Murphy

WN Watson

Sunday Times Schools, 1978

Sicilian Dragon B78

(top)



Willie in 1976



.. and in 2008 ..

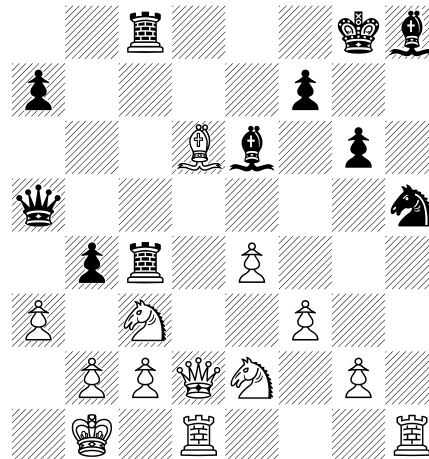
1 e4 c5 2 $\text{d}f3$ $\text{d}c6$ 3 d4 cxd4
 4 $\text{d}xd4$ g6 5 $\text{e}e3$ $\text{d}f6$
 (Difficult to believe at such an early stage and because we are soon back in highly analysed country, but this position is extremely rare. It seems to have been studied by Bilek and Portisch when young masters.)

Here, the validity of the Yugoslav Attack, characterised by white's early f3, is subjected to a strenuous test.

6 $\text{d}c3$ $\text{e}g7$ 7 $\text{e}c4$ 0-0 8 $\text{e}b3$
 d6 9 f3 $\text{e}d7$ 10 $\text{c}d2$ $\text{e}c8$ 11
 0-0-0 $\text{d}e5$ 12 $\text{c}b1$ $\text{d}c4$ 13
 $\text{e}xc4$ $\text{e}xc4$ 14 h4 $\text{c}c7$ 15
 $\text{d}de2$ $\text{e}c8$ 16 h5 b5 17 hxg6
 hxg6 18 $\text{e}h6$ $\text{e}h8$ 19 $\text{e}f8!$
 $\text{d}h5$ (Or if "19 ... $\text{e}xf8$ 20
 $\text{d}d5$ $\text{c}d8$ 21 $\text{e}xh8+$ $\text{c}xh8$ 22
 $\text{c}h6+$ $\text{c}g8$ 23 $\text{d}xf6+$ exf6 24
 $\text{e}h1$ $\text{e}h3$ 25 $\text{c}xh3$ $\text{c}c7$ 26

$\text{c}h8\#$ " says Fritz.) 20 $\text{e}e7$
 $\text{e}e6$ 21 $\text{e}xd6$ $\text{c}a5$ 22 a3 b4

black Watson



white Murphy to play

23 $\text{e}xb4$ $\text{e}xb4$ 24 axb4 $\text{c}xb4$
 25 g4 $\text{e}b8$ 26 $\text{c}c1$ $\text{e}c4$ 27
 gxh5 $\text{e}xe2$ 28 hxg6? (28
 $\text{d}xe2$ $\text{e}xb2$ 29 $\text{e}d8+$ $\text{e}xd8$ 30
 $\text{c}xb2$ and white's material
 advantage will slowly tell.) 28
 ... $\text{e}xc3!$ 29 gxh7+ $\text{c}f8$ 30 b3
 $\text{e}xd1$ 31 $\text{e}xd1$ $\text{e}g7$ 32 $\text{c}e3$
 $\text{c}a3$ 33 e5 a5 34 $\text{e}d4$ $\text{c}e7$ 35
 $\text{e}a4$ $\text{e}a8$ 36 e6 $\text{e}f6$ 37 $\text{e}e4$
 $\text{e}g7$ 38 $\text{e}g4$ $\text{e}d8$ 39 $\text{e}xg7$
 ("39 $\text{c}g1!$ + even stronger";

again from Fritz.) 39 ... ♔xg7
 40 ♚g1+ ♔f6

RS Eames

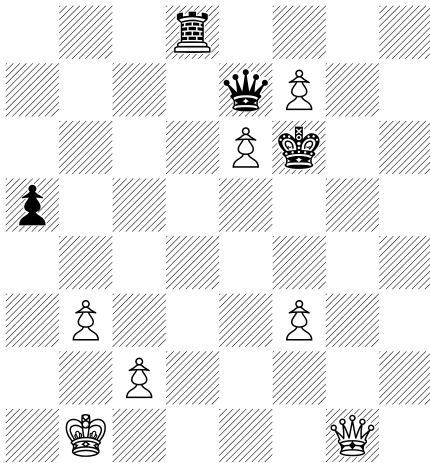
London League, 2008

Closed Sicilian B25

[Piper]

1 e4 c5 2 ♘c3 ♘c6 3 g3 g6 4
 ♙g2 ♙g7 5 d3 d6 6 ♙g5 [I
 find that the main lines of this
 variation, where black plays ...
 e6, ... ♘ge7 and ... OO, very

black Watson

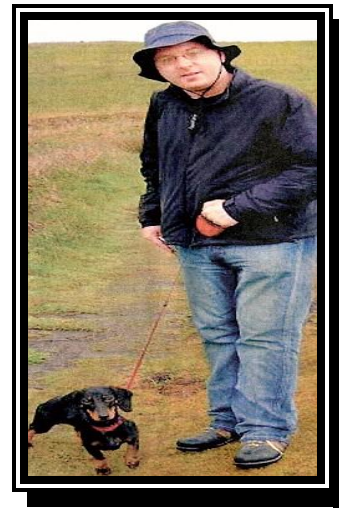


white Murphy to play

41 ♚g4 ♜f8 42 ♚f4+ ♔xe6 43
 ♚c4+ ♔f6 44 ♚a6+ ♔xf7 45
 ♚xa5 ♔g7 46 ♚h5 ♚e1+ 47
 ♔b2 ♚g3 48 ♚d5 ♜xf3 49
 ♚d7+ ♔g6 50 ♚e8+ ♔g5
 Adjudicated
 0-1.



Game 131
MS Piper



Matthew Piper



Bob Eames

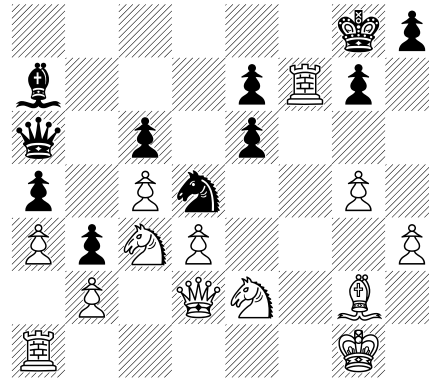
depressing for white. A
 subsequent ... f5 kills white's
 attacking ambitions. Hence

the idea of 6 ♖g5 is either to encourage ... h6, making castling difficult after white plays ♕e3 & ♔d2, or steer black into lines with ... ♘f6, giving white more attacking targets. In addition, many an internet game has ended 6 ... c6 7 ♕xd8 1-0. Yes, really .. it is not the most convincing of moves, but it has been used by Nigel Short (to draw with Carlsen) and the 2008 British Champion, Stuart Conquest. However, the drawbacks. One of the main issues is that after developing his kingside pieces white cannot really begin to attack with f4 while the bishop is outside the pawnchain. So, white's best plan is to delay the knight's development, from g8 in the hope that white will have to waste a tempo returning the bishop to a safer square.] **6 ... ♜b8 7 ♚d2 b5 8 ♘ge2 b4 9 ♘d1 a5 10 0-0** [All natural developing moves so far. Now, black should unpin the e-pawn by ... ♚b6 or ... ♚c7. Alternatively, 10 ... ♘d4 is a useful move, threatening ... ♕h3 to swap the white squared bishops in many lines.] **10 ... a4!? 11 a3**

b3 12 c3 [Now, although the advanced pawns are restrictive, they are a potential weakness and black's queenside counterplay is stalled. I considered 12 c4 at once but felt that black would reply with ... ♕a6, and, after I plays c4, the bishop is misplaced. Perhaps black should develop his pieces rather than try to prevent 13 d4.] **12 ... ♕a6 13 h3** [A useful, to assist later kingside expansion and also preventing a knight coming to g4 after 13 ... h6 14 ♕e3 ♘e5 15 c4, removing the white bishop.] **13 ... ♚b6 14 ♕e3 ♘f6 15 c4** [Now black has committed his knight, I felt it was time to block the queenside and start a kingside attack. Yes, the d4 is very weak, but if you worry about such things, then the Closed Sicilian is not the opening for you! At least, ♘f6 is blocking the long diagonal for the moment.] **15 ... 0-0 16 ♘dc3 ♚a5** [The only way to defend his a-pawn, but the Queen is tied to that square, and arranging further defence of the a-pawn will take time. Black needs to put his piece

on d4, but this is problematical, as once the knight on c6 moves, there will be tactics based on $\text{N}d5$, when a $\text{N}xe7+$ *zwischenzug* gains a pawn during any Queen exchanges.] **17 f4 Bbc8** [17 ... $\text{Q}b7$ or 17 ... $\text{Q}a8$ were both better.] **18 g4 e6?** [This encourages white's attack by weakening f6. More usually, in Closed Sicilian positions, ... $\text{N}d7$ occurs after white plays f5, in order to reply with ... $\text{N}e5$, and the weakness of the d-pawn delays white's attack.] **19 f5 Bfe8** [Again questionable, but black was worried about g5, and f6, when the bishop, retreating to h8, will never emerge.] **20 fxe6 fxe6 21 Qh6** [Demanding 21 ... $\text{B}f8$, but time pressure claims another inaccuracy.] **21 ... Nd4? 22 Qxg7 Qxg7** [If 22 ... $\text{N}xe2+$ 23 $\text{Q}xe2$ $\text{Q}xg7$ 24 e5 wins.] **23 e5!** [23 $\text{B}xf6$ $\text{N}xe2+$; 23 $\text{N}xd4$ cxd4 24 $\text{B}xf6$ dxc3 are insufficient.] **23 ... dxe5 24 Bxf6**

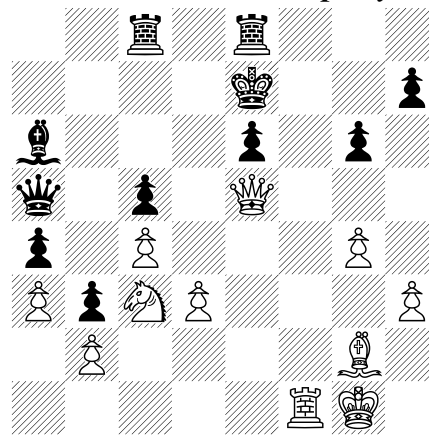
black Eames to play



white Piper

24 ... Nxe2+ [After 24 ... $\text{Q}xf6??$ 25 $\text{N}e4+$ is fatal.] **25 Qxe2 Qxf6 26 Bf1+ Qe7** [26 ... $\text{Q}g5$ 27 $\text{Q}xe5+$ mates in four; 26 ... $\text{Q}g7$ 27 $\text{Q}xe5+$ $\text{Q}g8$ 28 $\text{N}d5$ also wins, as 28 ... cxd5 29 $\text{Q}xd5+$ mates.] **27 Qxe5 1-0.**

black Eames to play



white Piper

[There is no defence to the threat of $\text{N}d5+$ followed by $\text{B}f7+$. If 27 ... $\text{B}f8$ 28 $\text{Q}g7+$

decides. Or 27 ... ♔d7 28 ♘d5 ♖f8 (Instead 28 ... ♖e7 29 ♘f6+ ♔d8 30 ♚d6+; 28 ... exd5 is mate after 29 ♖f7+ ♔c6 30 ♚xd5+ ♔b6 31 ♖b7+ ♘xb7 32 ♚xb7#) 29 ♖xf8 ♖xf8 30 ♚g7+.]

Much like his old adversary, and contemporary as a Cornish teenager, Michael Adams, Matt not only sees these variations with great speed, but rattles them off without sight of the board too! Thus Matt's kind submission was not only extremely welcome and entertaining, but sets a benchmark for our Newsletter, in terms of detailed, exhaustive, analysis. So, submit your game scores and disprove my opinion.



Game 132
FM GK Burgess
WFM NK Regan
 London World Record
 Marathon 510 Blitz Games
 World Record Attempt, 1994
Alekhine, Four Pawns

[After Burgess ex 'The Mammoth Book of Chess']



Graham Burgess



Nat looking businesslike



Nat at the *4NCL, 2009



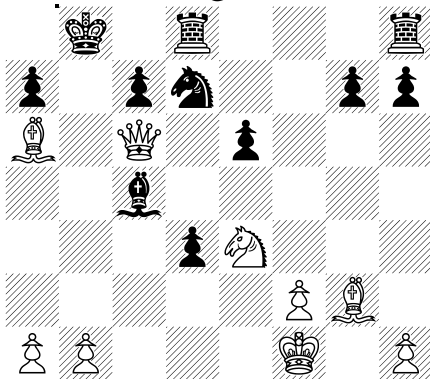
Nat in defensive mode?



.. and on her mettle ..

1 e4 Nf6 (Provocative since Burgess wrote two books on the Alekhine.) 2 e5 Nd5 3 d4 d6 4 c4 Nb6 5 f4 dxe5 6 fxe5 Nc6 7 Qe3 Qf5 8 Nc3 e6 9 Nf3 Qg4 10 Qe2 Qxf3 11 gxf3 Wh4+ 12 Qf2 Wf4 13 c5 Nd7 14 Ne4 [14 Qb5 f6 (14 Qe7)] 14 ... f6 15 Wa4 0-0-0 16 Ed1 [16 d5 Ncxe5 17 c6] 16 ... fxe5 17 Qg3 Wh6 18 Ed3 exd4 19 Eb3 Qxc5 20 Exb7 Qxb7 21 Qa6+ Qb8 22 Wxc6 Wc1+ 23 Qf2

black Regan to move



23 ... Qxb2+ (This is the point that GB exclaims 'Oh dear' in his book and "Oh bugger!!" in the Cambridge CC Mag 23 d3+ 24 Qg2 Qxb2+ 25 Qh3 Qd6 (25 ... e5 26 Nc3) 26. Nxd6 Qb6 27 Rb1 Qxb1 28 Ne8 Qf1+ 29 Qh4 g5+ 30 Qxg5+- again, a line from Fritz.) 24 Qf1 Qb6 0-1.



Game 133

RFA Harman

G Wagner West Germany

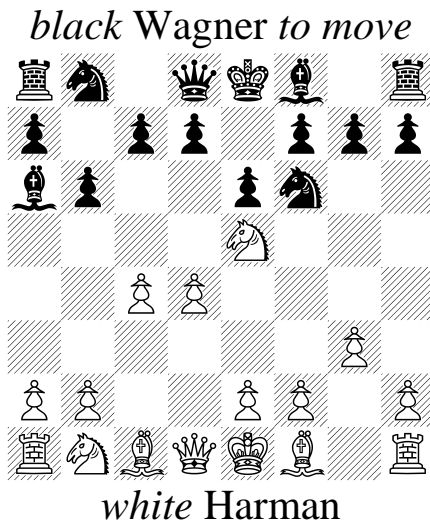
Hastings Main B, 1976/7

Queen's Indian E15

1 d4 Nf6 2 Nf3 e6 3 c4 b6 4 g3 Qa6

This strange move was briefly championed by Soviet analysts in the nineteen sixties, but resumed popularity forty years thereafter. However, noticing that my opponent won from this position in an earlier round, I prepared an equally odd reply.

5 $\text{Ne5!?$



The question is posed: is this playable after 5 ... d6 6 ♔a4+? In the event, black was not willing to enter uncharted territory.

5 ... ♙b7 6 f3 c5 7 ♙g2 cxd4 8 ♔xd4 ♘c6 9 ♘xc6 dxc6 10 ♔c3

Also noting that black favoured endgames, I decided to take risks, which included the implications of sacrificing my queen for a mix of lesser material.

10 ... ♔d7 11 b3 0-0-0 12 ♘d2?!

Speculative play, needing to go for the win.

12 ... h5?!

Black has similar ideas.

13 ♙b2 h4 14 0-0-0 h3 15 ♙f1 ♙c5 16 e4 ♔c7 17 ♘b1!?

More provocation.

17 ... ♙xd1+ 18 ♔xd1 ♙d4!?

Black succumbs to this tempting move, instead of the solid 18 ... ♔c7.

19 ♔xd4 ♙d8 20 ♔xd8+ ♔xd8+ 21 ♔c2 c5 22 ♙d3 a6 23 ♘d2 ♔d7

Deciding, correctly, that his kingside needs extra protection.

24 ♙d1 ♔e7 25 e5

Committal, but the attraction of an knight's outpost is too tempting.

25 ... ♘d7 ["25 ... ♘g8."—Wagner] 26 ♘e4 ♔a8 27 ♙e1 ♙c6 28 f4 a5 29 a4 ♘b8

With this move, black offered a draw, and seemed surprised by my refusal. However, white's position is very solid, and a time-scramble is imminent, with black needing to play about ten moves in fifteen minutes.

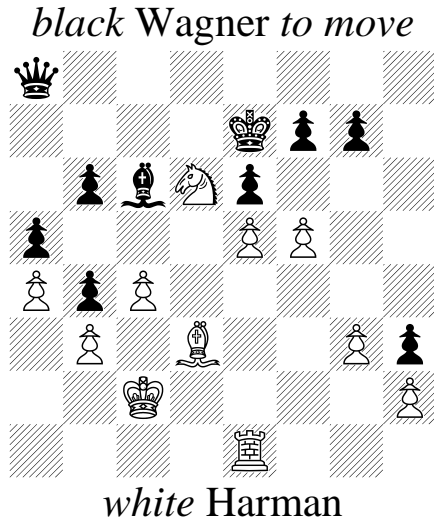
30 ♘d6 ♘a6 31 ♙c3

White seeks to exchange a potentially dominant knight.

31 ... ♘b4+ 32 ♙xb4 cxb4 33 f5

An important moment. White needs to justify his draw

decision, while black feels aggrieved that a generous offer has been turned down. By these processes, the seeds of psychological doubt are sewn, and the game decided.



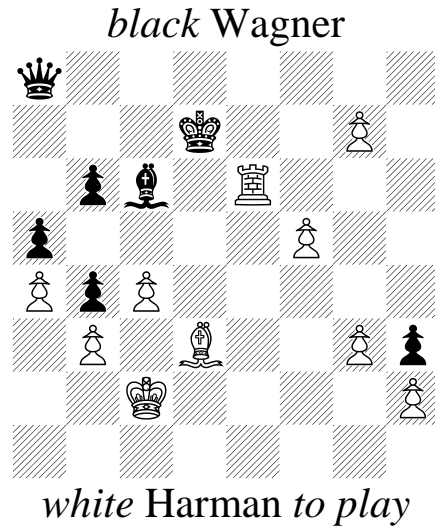
33 ... f6?!

Played too quickly and with insufficient care. Mentally, black's concern for his time shortage is undermining the need for solid defence.

34 exf6+

Of course, and not too difficult to analyse the consequences, including the amusing king-march, but a concept involving an amazing game conclusion.

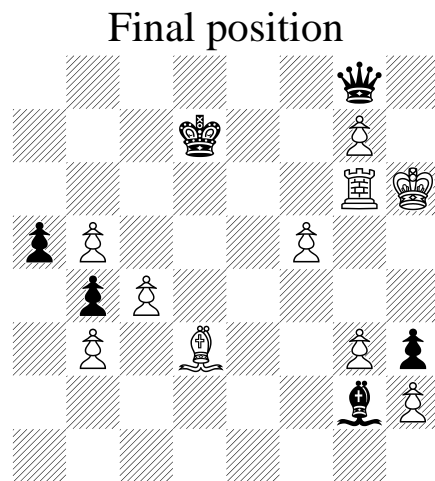
34 ... ♔xd6 35 ♖xe6+ ♔d7 36 fxg7



36 ... ♔g8 37 ♖g6 ♔h1?

An unpleasant prospect of finding four moves in one minute, prior to realising the hopelessness of his position.

38 ♔d2! b5 39 axb5 ♔f3 40 ♔e3! ♔g2 41 ♔f4 ♔b8+ 42 ♔g5 ♔g8 43 ♔h6



Harman-v-Wagner

And with time to think, white resigned. **1-0**.

However, following a post mortem, my opponent suggested that, apart from 'a rush of blood' on move thirty-six, under severe clock pressure, he should have played 25 ... ♖g8, and refrained from the dubious march of his h-pawn.



Game 134

GM **JF Parker**

GM **DWL Howell**

*4NCL Sunningdale, 2008

Grünfeld D94

1 d4 ♖f6 2 c4 g6 3 ♘c3 d5 4 ♗f3

Jonathan seldom gets involved in crucial opening theory, preferring to rely on solidity and general principles.

4 ... ♗g7 5 cxd5 ♗xd5 6 e3 0-0 7 ♗c4 ♗b6 8 ♗b3 c5 9 0-0 ♗g4 10 dxc5

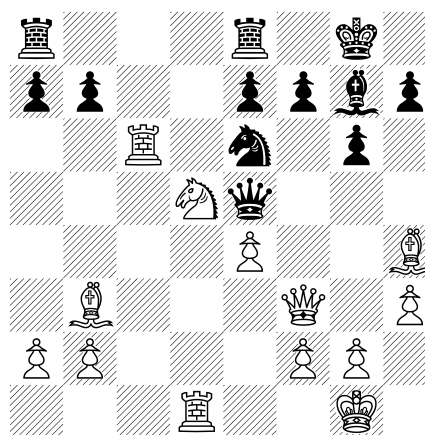
Pragmatic as ever. It must be difficult for such pretenders as

Howell, armed with the latest theoretical wrinkles, to face the logic, and serenity of a player who was also regarded as 'Britain's finest prospect' albeit in the nineteen nineties.

10 ... ♘6d7 11 h3 ♗xf3 12 ♙xf3 ♗xc5 13 ♖d1 ♙c8 14 ♗d5 ♗c6 15 e4 ♖e8 16 ♗g5 ♗e6 17 ♗h4 ♙b8 18 ♖ac1 ♙e5 19 ♖xc6!

Black's queen is short of good squares but Jon swoops on this weakness, starting with this temporary exchange offer.

black Howell to move

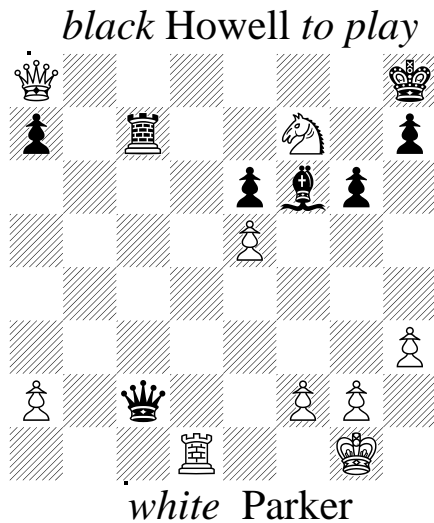


white Parker

19 ... bxc6 20 ♗xe7+ ♔h8 21 ♗xc6 ♙xb2 22 e5!

Black square interference is the clincher.

♖ec8 23 ♗f6 ♖c7 24 ♗xe6 fxe6 25 ♗d8! ♗xf6 26 ♙xa8 ♙c2 27 ♗f7+ ...



27 ... ♔g7 28 ♚h8+ ♕xf7 29 ♚xf6+

Forcing resignation. An impressive demolition of England's No. 3.

29 ... 1-0.



Jonathan Parker



David Howell

★★★

Kindly send your game scores for publication. Any grade of player will receive careful consideration but no elementary blunders please. Naturally, James or Mike would also welcome photographs, although it is well-known that Cavendish members, although strong, and more than averagely wealthy, are not famous for being photogenic; your Editor is a prime example. Maybe a small donation to club funds would solve this problem-?

RFA H